

The Library of
J. Edwin Quinn
ARCHITECT

A "CLASS APPEAL" *Location*
936 NORTH MICHIGAN AVENUE

Calibre of Management

Important buildings are identified by the calibre of their management.

To Chicagoans — of two generations — our Management has meant efficient, friendly relationship; satisfying and enduring.



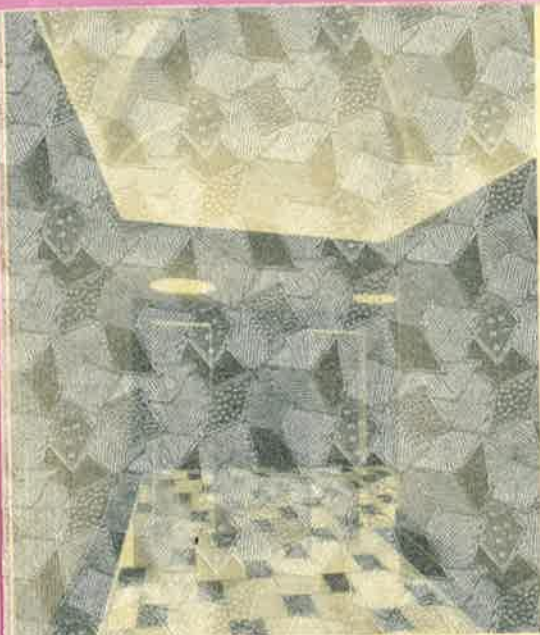
ROSS, BROWNE & FLEMING

MANAGING AGENTS

919 North Michigan Avenue

Telephone Whitehall 7373

CHICAGO



*T*his modern lobby is entirely in harmony with its discriminating surroundings.

Calibre of Management

important buildings are identified by the calibre of their management.

To Chicagoans — of two generations — our Management has meant efficient, friendly relationships, achieving and ensuring.



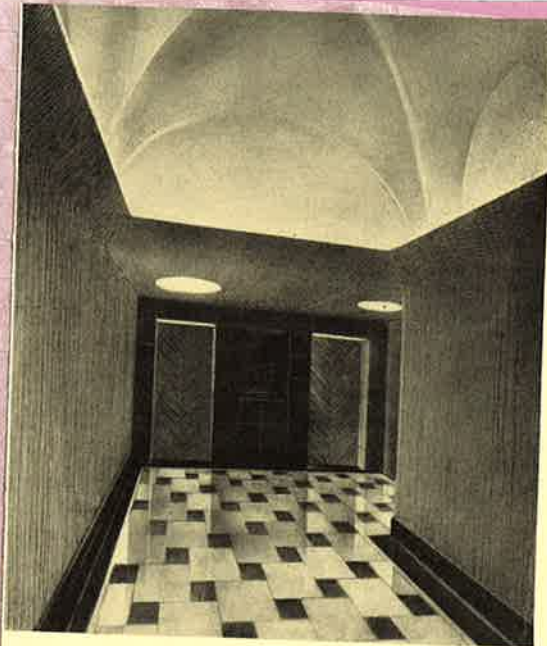
ROSS, BROWNE & FLEMING

MANAGING AGENTS

315 North Michigan Avenue

Telephone: Southbush 1-3

CHICAGO



*T*his modern lobby is entirely in harmony with its discriminating surroundings.



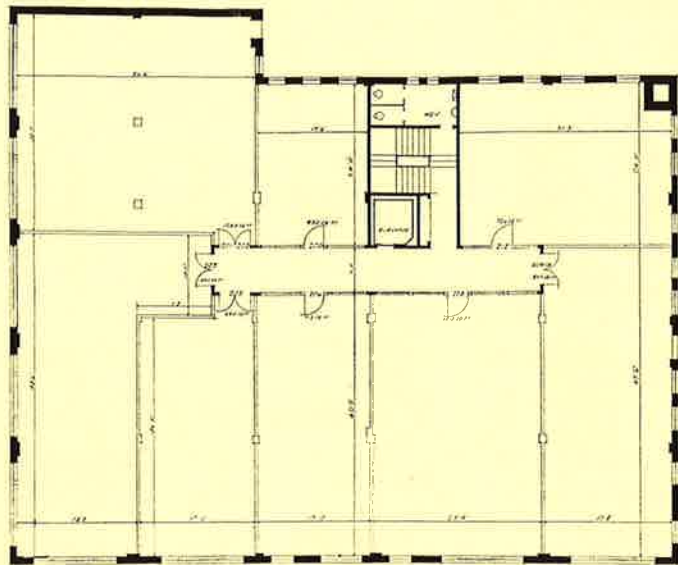
*I*n the very heart of Chicago's exclusive shopping and business center, this building offers numerous advantageous features.

A Growing Business and Shopping Center

Offices, Shops or Studios in the 936 North Michigan Avenue Building enjoy the distinctly discerning patronage which accompanies their locale.

This building, ever attractive, with its completely new remodelling of Lobby and Upper Floors, today affords added opportunities to alert executives.

The merit of this location is assured by the immediate presence of Chicago's most prominent shops, famous restaurants, The Drake Hotel, and the nationally famed Palmolive Building.



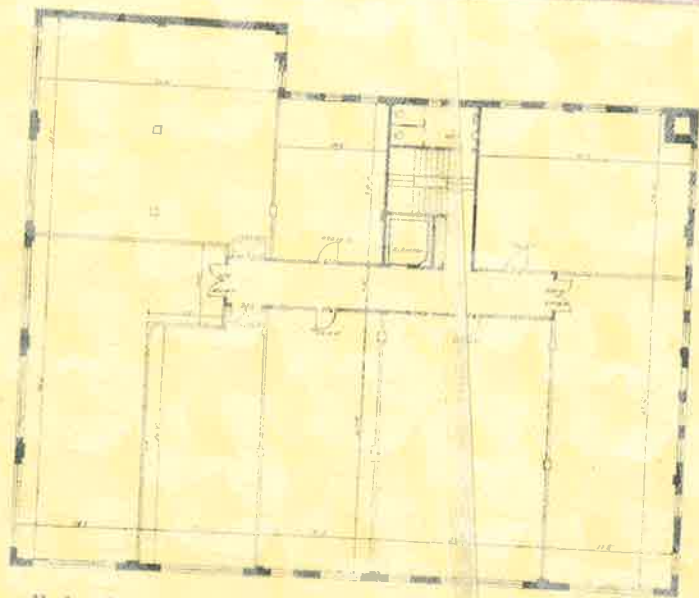
Offices are well day-lighted. Areas lend themselves to efficient and space-saving arrangements. Full office building service prevails.

A "BETTER" Location at Modest Rental

The rental at 338 is moderate compared to surrounding areas. Here, you can afford to have a "prestige" location that you would pay for elsewhere in less favorable locations.

At 338 you will find a building that is modern at its best — a building unique, desirable and difficult to duplicate.

Your inspection is invited. For an appointment or further details, telephone White 4-7131.



Offices are well day-lighted. Areas lend themselves to efficient and space-saving arrangements. Full office building service prevails.

A "BETTER" Location ... at Modest Rental

The rentals at "936" are moderate compared to surrounding values. Here it really costs no more to have a "prestige" location than you would pay for other, less favorable locations.

At "936" you find Michigan Avenue mirrored at its best — it is a location unique, desirable and difficult to duplicate.

Your inspection is invited. For an appointment or further details, telephone Whitehall 7373.