

# BULLETIN

WEESE  
STUDIO

10-19-57

LISTS  
FX =

RIEKE (2)  
CONSTR.

OK 11/22/57  
JW

## NORTH PORCH DECK

preparation before TIMBER STRUCTURES  
can install; needed by 10-27:

- 1) 8x16 tapered beams
- 2) tie rod assembly (WICKMAN)
- 3) form conc. piers (pour later)

NOTE: east pier off location. Shape  
beam accordingly

## MILLWORK

French door jambs:  
(top of sheet 2).

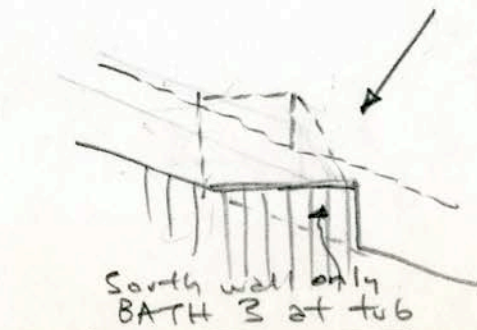
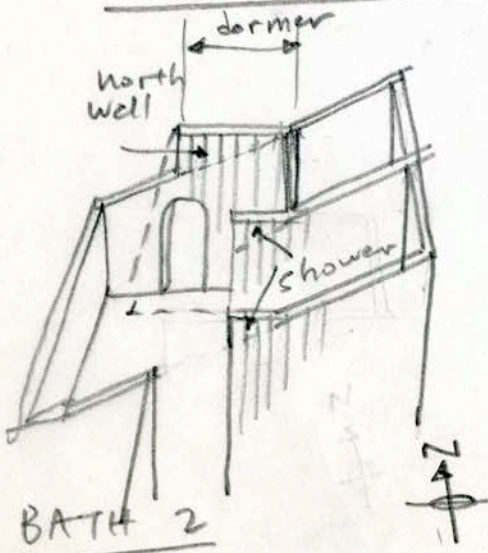
rabbit  $\frac{5}{8}$ " for whiteo Hwe instead  
of  $\frac{1}{2}$ "

also rabbit doors continuous  
across top & bottom to receive  
hwe.

## TIMBER STRUCTURES

1) eliminate 1'-4" length of wall  
@ rolling base cabinet (kitchen)

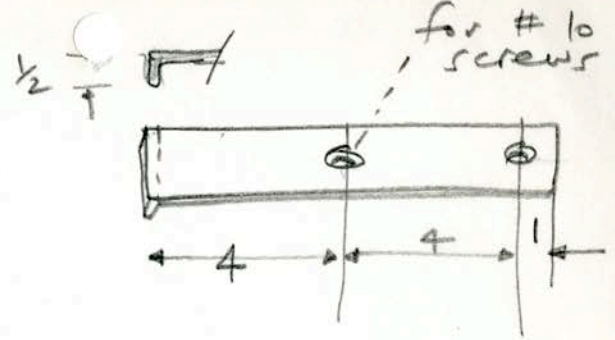
2) run partitions in baths 2 & 3  
into dormer as shown =



# TRANSITE FLUE BRACES

make eight (8)

$\frac{5}{16} \times 1\frac{1}{2} \times 9$



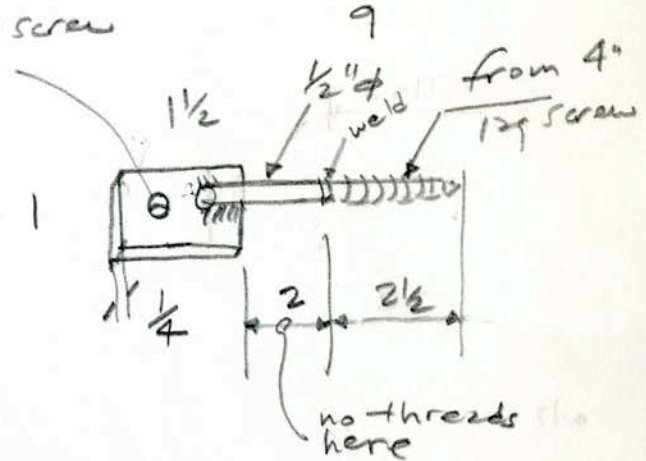
- deliver to RIEKE CONSTR. by 11-1-57

drill for #8 screw

# MARBLE LAVATORY BRACKETS

make eight (8) (de burr & ease corners & edges)  
paint white (2 coats)

- deliver to ERNIE RICE by 11-1-57

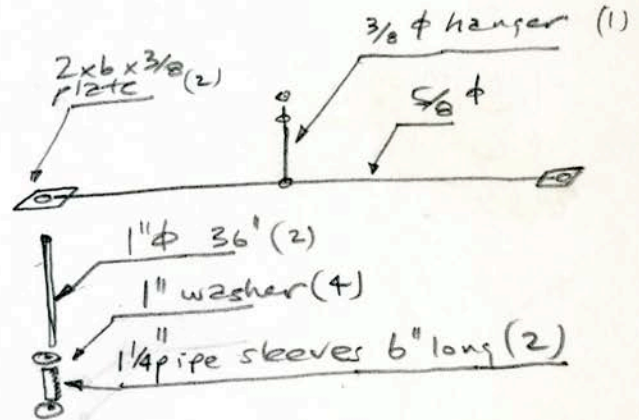


# BALCONY RAILINGS

- make four (4) See SHEET 4 OF DWG FOR DETAIL  
deliver 1-1-58

# PORCH DECK TIE ROD & FITTINGS

- deliver by 11-25-57 See SHEET 4 (this is superseded)  
to RIEKE CONSTR.



# FIRE PLACE UNIT (heating unit)

cut down as before  
to be delivered to WICHMAN

# WICHMAN MISC. FITTINGS

FX: on 11/21/57  
RIEKE (2)  
WICHMAN (1)

11-19-57